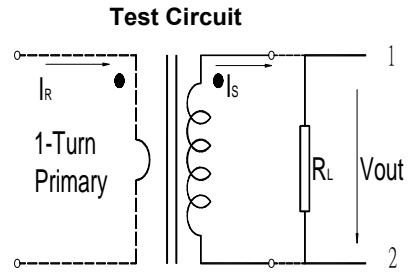
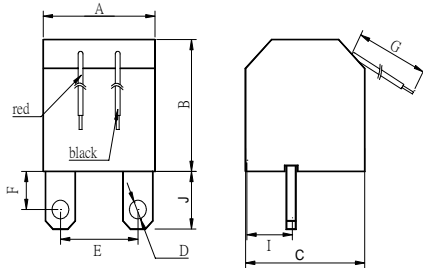
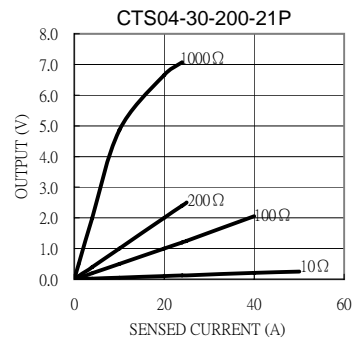
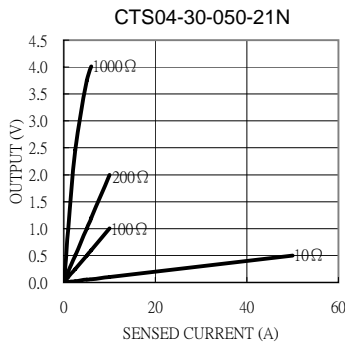


CTS04-30 Series



Electrical Characteristic										Mechanical Dimension						
Part No.	I_R (A)	V_{out} (V)	Acc.Class (%)	I_{min} (A)	I_{max} (A)	R_L (Ω)	f (%)	δ ($^{\circ}$)	DCR (Ω)	A(max)	B(max)	C(max)	D(max)	E(max)	F(max)	G(± 3)
										mm / inch						
CTS04-30-050-21N	0.02~5	0.501	0.5	0.02	10	100	-0.220	14.0	29	30.85	32.95	32.85	6.7	20.71	7.7	148
CTS04-30-200-21P	0.1~20	1.004	0.2	0.1	40	100	0.030	4.0	100	1.22	1.30	0.27	0.26	0.83	0.30	5.83



Definition:

- I_R : Rated Current
- V_{out} : Output voltage.
- Acc.Class: Accuracy class.
- I_{min} : Min. detecting current which remains linearity.
- I_{max} : Max. detecting current which remains linearity.
- R_L : Load resistance.
- $f(\%)$: Ratio error.
- $\delta(^{\circ})$: Phase shift.
- DCR: Secondary Winding DC Resistance.

Remark:

1. Frequency band :50Hz~60Hz.
2. Operating temperature: -25 $^{\circ}$ C~80 $^{\circ}$ C.
3. All current ,voltage refer to rms value.
4. RoHS compliant.
5. Hi-Pot: 2500V_{RMS}/1min between windings.
6. Formula of 2nd output : $V_{out}=I_R \cdot R_L / N(\text{Turns})$.
7. Product parts meet UL requirements.